

The background of the top half of the image is a circular view looking down the center of a PET/CT scanner. The gantry is composed of many curved, metallic segments, each with small circular components. In the center of this circular structure is a dark purple circle containing a white molecular model with several spheres connected by lines. The text "Molecular Imaging" is written in a white, outlined font across this central circle.

# Molecular Imaging

 **SEDECAL**

## **Super Argus PET/CT**

Making the invisible detectable





## CORPORATE OVERVIEW

On January 1994 **SEDECAL** was founded with Spanish equity (Sociedad Española de Electromedicina y Calidad, S.A.; **SEDECAL**). During this time, we have had a continuous growth that has positioned us as worldwide leaders in OEM design and manufacturing of high frequency X-Ray generators and X-Ray systems.

We can proudly say that this success has been reached thanks to the human factor. Since the very beginning our people have been completely devoted and involved on the fundamental objectives of the company. Following this philosophy, the company has obtained all quality and environmental certifications and registrations for the company and its products: **ISO 9001, ISO 13485, ISO 14001, EMAS, CE, UL, CSA**, etc.



**SEDECAL has factories in Spain, France, Italy, Hungary, Turkey, USA and Brazil.**

**Our solutions are exported to 160 countries.**





## Molecular Imaging business unit

SEDECAL's CT, PET and PET/CT are a powerful new family of tools for small-animal molecular imaging that integrate a fully functional PET and CT, a major breakthrough in high performance functional molecular imaging technology for biomedical research.



**The dual modality configuration delivers faster scan times with superior image resolution, improved localization and quantifiable data.**

- We manufacture in house our unique DOI Phoswich detector.
- One of the biggest install base. Oldest company in the market from 2002.
- Global service and support organization.

# MOLECULAR IMAGING SOLUTIONS

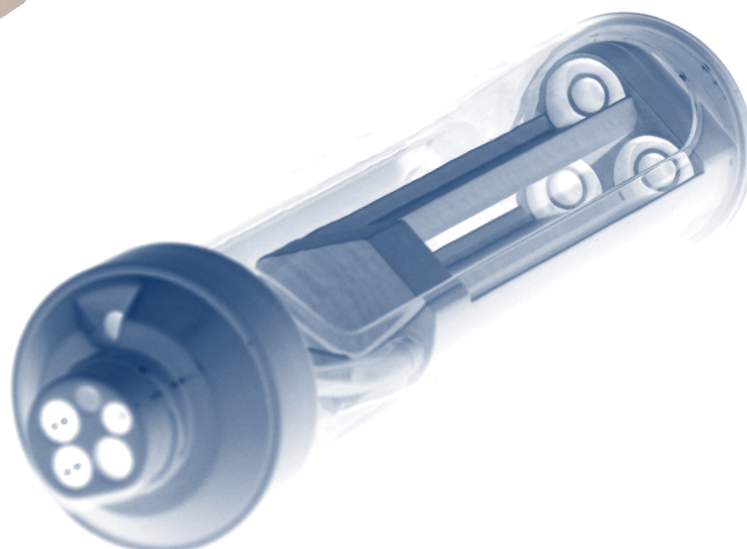
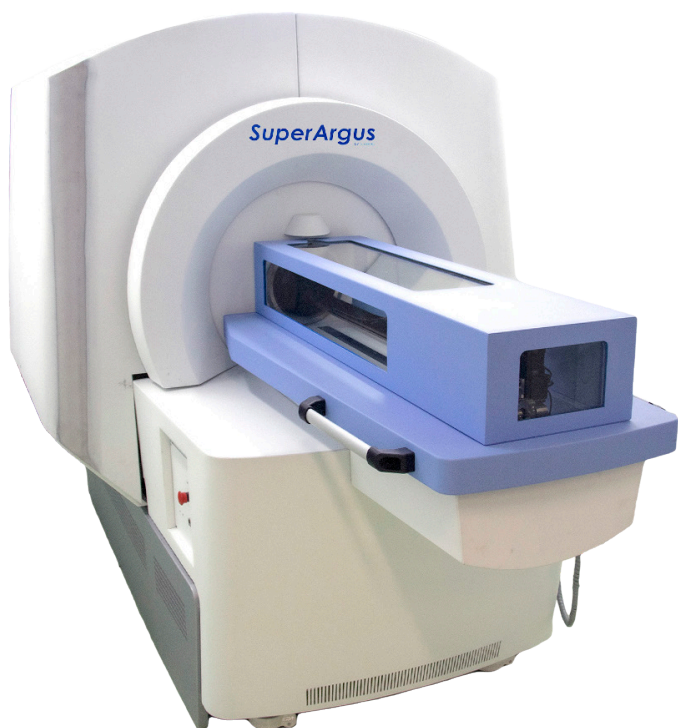
## SUPER ARGUS PT/CT main benefits

- Unique DOI Technology
- Unique REAL TIME PET Imaging
- Multi animal exams
- From Murine to Primate Imaging capabilities
- Sub-millimetric and uniform resolution
- Ultra Fast 3D OSEM reconstruction without a cluster
- Upgradable path among the different models

The core of the SuperArgus PET/CT system is its Phoswich detector technology, which provides true depth-of-interaction (tDOI) or parallax-correcting capability, implemented through dual-scintillator phosphor sandwich detector modules.

Along with this advanced crystal technology, the SuperArgus PET/CT has the best in its class acquisition electronics with the following differentiating advantages:

- Highest resolution in the market
- Uniform resolution across the entire FOV
- Highest sensitivity per centimeter
- Highest dynamic time frame resolution: 2.5 ms
- Time stamp acquisition electronics
- Fully modular electronics.
- Parallel electronics acquisition, non multiplexing
- Superior image uniformity
- Faster scan times
- Fully integrated components
- Compact footprint

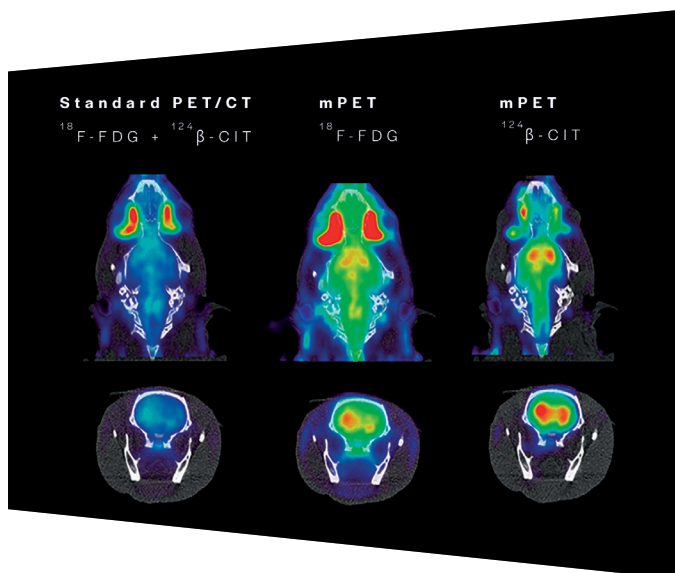
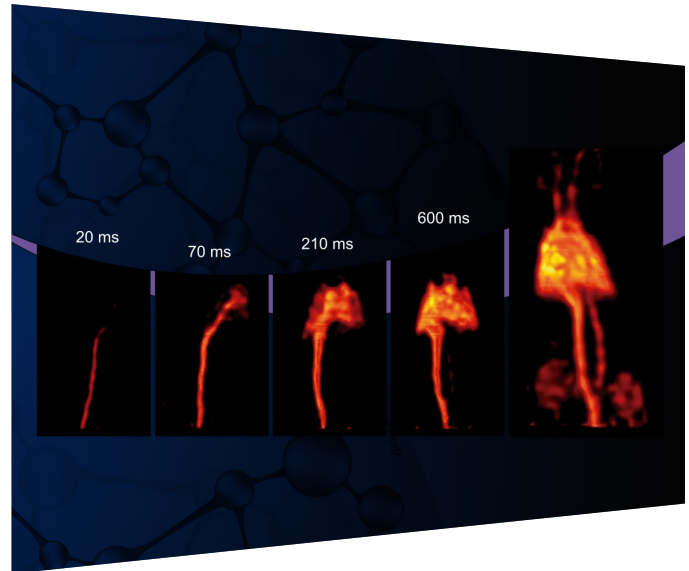




# MAIN SUPER ARGUS TECHNOLOGIES

## Real time PET: a PET imaging revolution

- Real time Image quality control
- Dynamic studies with time frame of 2.5 ms
- Immediate Go/ No-Go studies
- First-shot Imaging
- Instantaneous motion correction
- The movement is tracked using small fiducial markers
- They are spheres < 1 mm diameter FDG filled
- The acquisition could be dynamic or static
- Cardiac gated imaging sensorless
- Awake animals PET imaging
- Fully modular detectors technology
- Biopsy guided by PET Imaging
- Radiotherapy Image guide



## MULTITRACER: Enable Multiplex PET Imaging

The combination of the acquisition of standard emitter with a non-standard radioisotope achieves multiplex PET imaging.

The ability to simultaneously acquire signals/readouts from two tracers opens up a number of possibilities, as is performed in SPECT imaging.

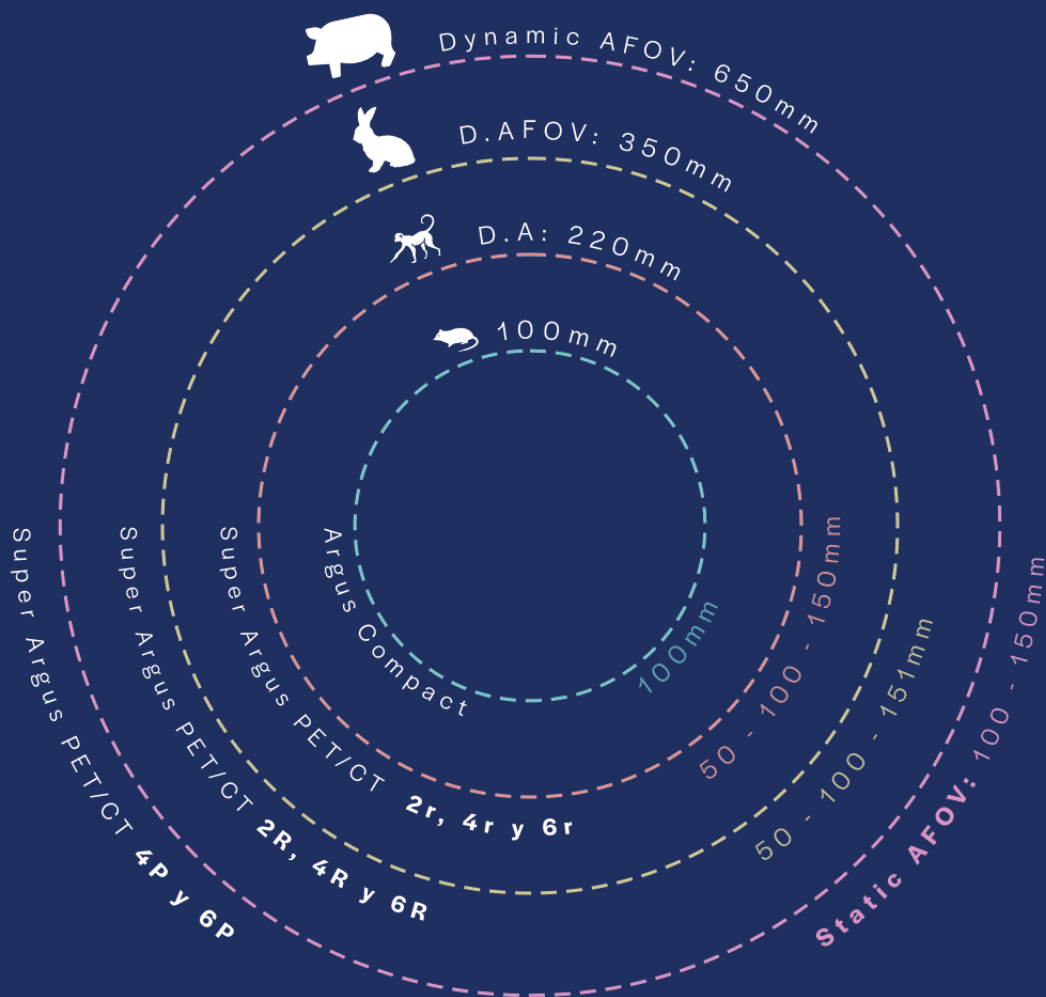
MULTIPLEXED PET enables querying multiple disease processes simultaneously!!!

## Multianimal studies

- High throuput
- Fast scanning with low dose



# TECHNICAL SPECIFICATIONS



## TEAM RELIABILITY



**José María Ortega**  
Vice-president of Operations



**Juan Manuel Arco**  
Molecular Imaging Manager



**Jesús López**  
Engineering Manager



### SPAIN

SEDECAL (Headquarters)  
C/ Pelaya, 9 - 13, Pol. Ind.  
Río de Janeiro 28110 Algete,  
Madrid España (Spain)

+34 916 280 544  
info@sedecal.com  
www.sedecal.com

### USA

SEDECAL USA Inc.  
7555 North Caldwell Av.  
Niles, IL 60714  
Phone: 800-920-9525  
Phone: 847-394-6960

### BRAZIL

CDK - Equipamentos de Raios-X  
R. Orense, 783 - Vila Maria Leonor,  
Diadema - SP, 09920-650, Brazil

+55 11 4055-1011  
vendas1@cdk.com.br  
www.cdk.com.br

### HUNGARY

SEDECAL MAGYARORSZAG kft.  
Vecsés, Dózsa György út 86,  
2220 Hungria

+36 29 550 220  
info@sedecal.com  
www.sedecal.com

### CHINA

SEDECAL BEIJING  
104 Unit, No.1 Building, No.7  
Rongchang East Street ,Beijing  
Economic-technological  
Development Area, 100176,  
Beijing, PRC.

+86 10-67806788  
info@sedecal.com  
www.sedecal.com